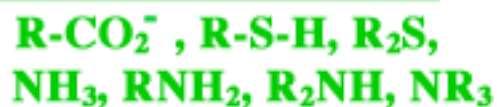


## ***Table of Nucleophiles***

### **Strong Nucleophiles**



### **Medium Nucleophiles**



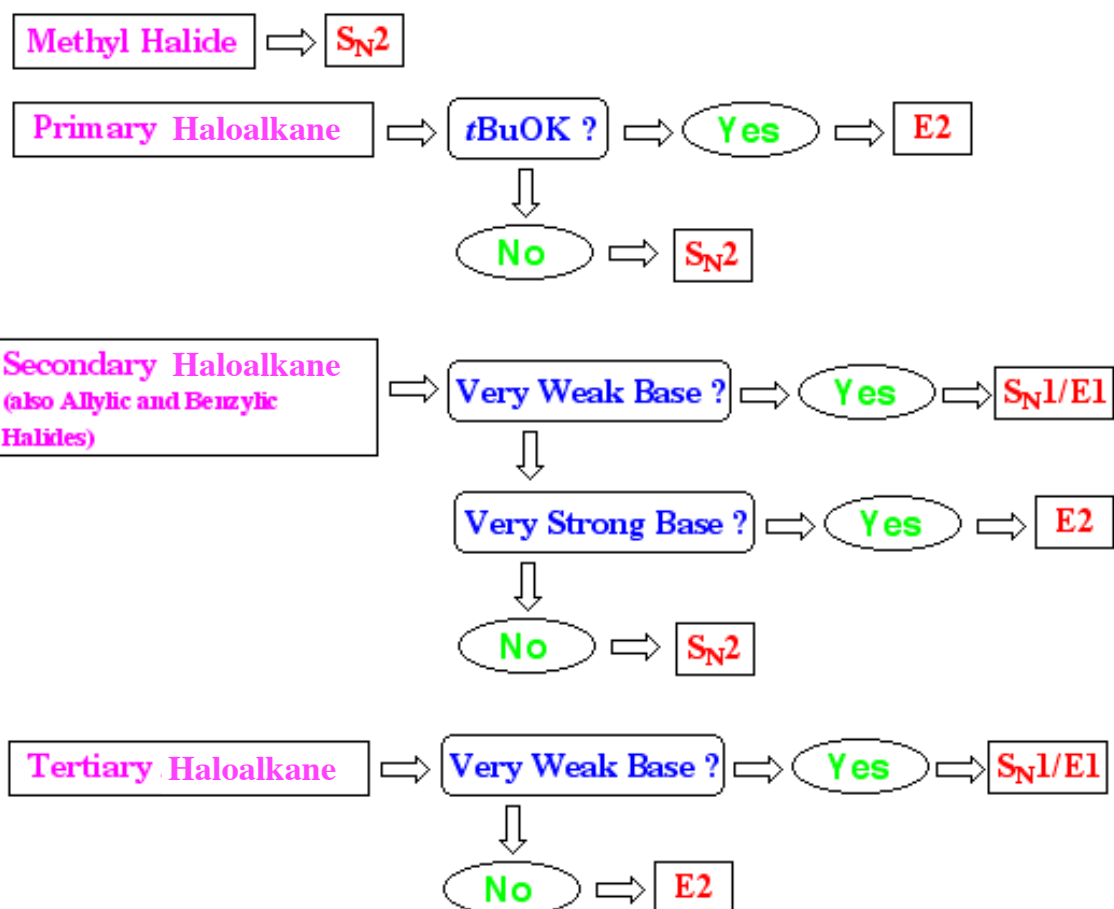
### **Weak Nucleophiles**



## ***Special Case***

***Tert-Butoxide ( $\text{tBuO}^-$ ) is a strong base, but is not a nucleophile due to steric hindrance.***

## Substitution/Elimination Decision Map



For S<sub>N</sub>2 Remember Chiral Center Inversion  
For E2 Remember Anti-periplanar and Zaitsev  
For S<sub>N</sub>1 Remember Chiral Center Scrambling  
For E1 Remember Zaitsev