

NAME (Print): _____

Chemistry 310N
Dr. Brent Iverson
1st Midterm
Feb. 16, 2012

SIGNATURE: _____

Please print the
first three letters
of your last name
in the three boxes

--	--	--

Please Note: This test may be a bit long, but there is a reason. I would like to give you a lot of little questions, so you can find ones you can answer and show me what you know, rather than just a few questions that may be testing the one thing you forgot. **I recommend you look the exam over and answer the questions you are sure of first**, then go back and try to figure out the rest. Also make sure to **look at the point totals** on the questions as a guide to help budget your time.

You must have your answers written in PERMANENT ink if you want a regrade!!!! This means no test written in pencil or ERASABLE INK will be regraded.

Please note: We routinely xerox a number of exams following initial grading to guard against receiving altered answers during the regrading process.

FINALLY, DUE TO SOME UNFORTUNATE RECENT INCIDENTS YOU ARE NOT ALLOWED TO INTERACT WITH YOUR CELL PHONE IN ANY WAY. IF YOU TOUCH YOUR CELL PHONE DURING THE EXAM YOU WILL GET A "0" NO MATTER WHAT YOU ARE DOING WITH THE PHONE. PUT IT AWAY AND LEAVE IT THERE!!!

Page	Points
1	(24)
2	(20)
3	(19)
4	(18)
5	(16)
6	(24)
7	(20)
8	(24)
9	(21)
10	(13)
11	(13)
12	(19)
13	(14)
14	(4)
15	(12)
Total	(261)
%	
T Score	
HW	
Total Grade	

(HW score + Exam Grade) \implies

Honor Code

The core values of the University of Texas at Austin are learning, discovery, freedom, leadership, individual opportunity, and responsibility. Each member of the University is expected to uphold these values through integrity, honesty, trust, fairness, and respect toward peers and community.

(Your signature)

Compound		pK _a
Hydrochloric acid	H-Cl	-7
Protonated alcohol	$\text{RCH}_2\text{OH}_2^+$	-2
Hydronium ion	H_3O^+	-1.7
Carboxylic acids	$\text{R}-\overset{\text{O}}{\parallel}{\text{C}}-\text{H}$	3-5
Ammonium ion	H_4N^+	9.2
β-Dicarbonyls	$\text{RC}-\overset{\text{O}}{\parallel}{\text{C}}-\text{CH}_2-\overset{\text{O}}{\parallel}{\text{C}}-\text{CR}'$	10
β-Ketoesters	$\text{RC}-\overset{\text{O}}{\parallel}{\text{C}}-\text{CH}_2-\overset{\text{O}}{\parallel}{\text{C}}-\text{OR}'$	11
β-Diesters	$\text{ROC}-\overset{\text{O}}{\parallel}{\text{C}}-\text{CH}_2-\overset{\text{O}}{\parallel}{\text{C}}-\text{COR}'$	13
Water	HOH	15.7
Alcohols	RCH_2OH	15-19
Acid chlorides	$\text{RC}-\overset{\text{O}}{\parallel}{\text{C}}-\text{Cl}$	16
Aldehydes	$\text{RC}-\overset{\text{O}}{\parallel}{\text{C}}-\text{H}$	18-20
Ketones	$\text{RC}-\overset{\text{O}}{\parallel}{\text{C}}-\text{CR}'$	18-20
Esters	$\text{RC}-\overset{\text{O}}{\parallel}{\text{C}}-\text{OR}'$	23-25
Terminal alkynes	$\text{RC}\equiv\text{C}-\text{H}$	25
LDA	$\text{H}-\text{N}(\text{i-C}_3\text{H}_7)_2$	40
Terminal alkenes	$\text{R}_2\text{C}=\underset{\text{H}}{\text{C}}-\text{H}$	44
Alkanes	$\text{CH}_3\text{CH}_2-\text{H}$	51

Signature _____

Pg 1 _____(24)

1. (4 points) What is the most important question in organic chemistry?

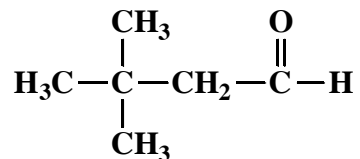
2. (14 points) Suppose a relative of yours is having an MRI. In no more than four sentences, explain to them what is happening when they have the MRI scan. We will be looking for a minimum of 7 key points here.

2 (cont.). (1 pt each) Fill in each blank with the word that best completes the following sentences about NMR.

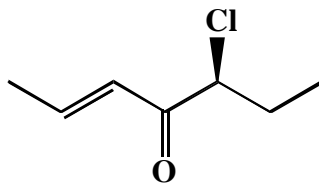
In the so-called "FT" approach to NMR, all the nuclear _____ are flipped instantaneously with a multi-frequency pulse, then the rate at which the _____ "relax" back to the _____ state is monitored. This latter approach uses a mathematical algorithm called _____ (FT) to reconstruct individual resonance signals for the different equivalent sets of hydrogen atoms so the spectra can be plotted. The great thing about this technique is that it allows many spectra to be taken quickly then averaged, dramatically increasing the _____ to noise ratio of the averaged spectra.

3. (5 pts each) Write an acceptable IUPAC name or draw a structural formula for the following molecules:

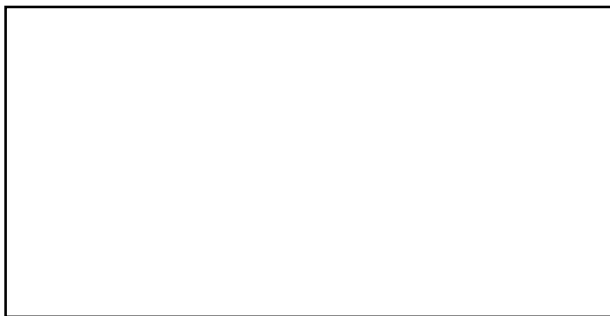
A.



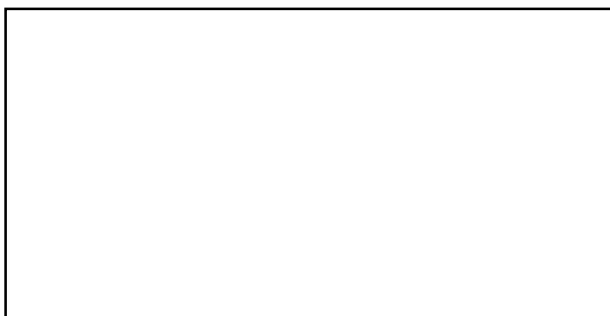
B.



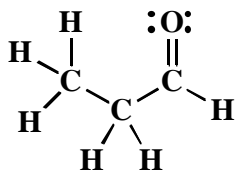
C. (2*S*,3*R*,4*R*)-4-Bromo-2-ethyl-3-hydroxyhexanal



D. (*R*)-2,2,3,3,4-Pentamethylpentanedial

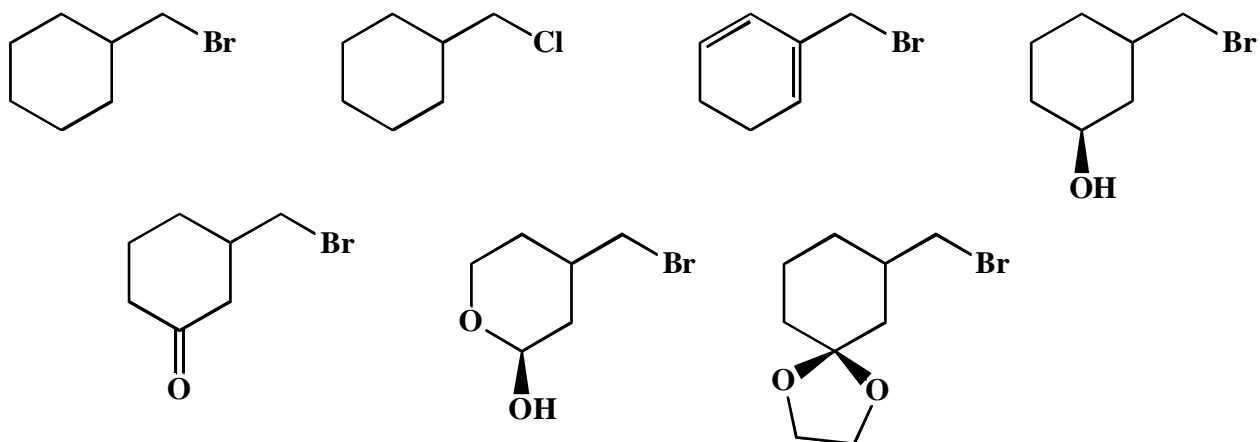


6. (8 pts) An important part of chemical understanding is being able to recognize the chemical reactivity of different functional groups. On the aldehyde below, DRAW A BOX around the atom that will be attacked by nucleophiles, DRAW A CIRCLE around the atom that will be protonated in acid, and DRAW TRIANGLES around the most acidic H atom(s).



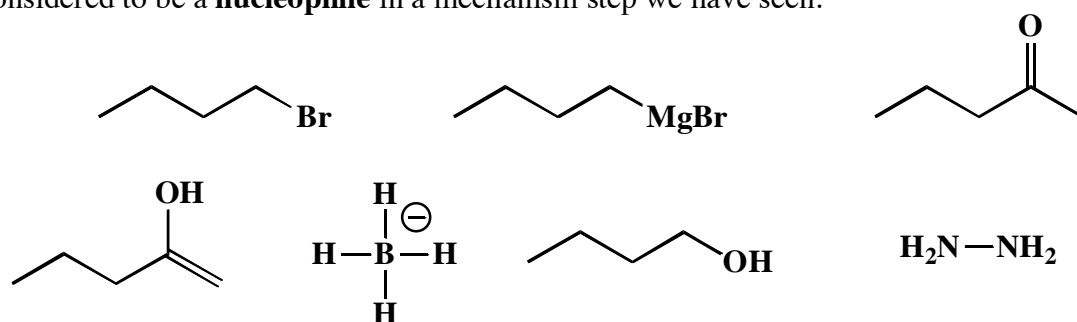
7. (4 pts) Given your answer to all the parts of the last question, what might go "wrong" if you use an organolithium reagent with the same aldehyde (propanal) intending to make a new carbon-carbon bond? Please use no more than two sentences, but be specific in your answer. (EXACTLY what might go wrong in the reaction with propanal?)

8. (7 pts) Of the list below, circle those molecules that could be used to make a Grignard reagent as shown. No protecting groups allowed for this one!!!

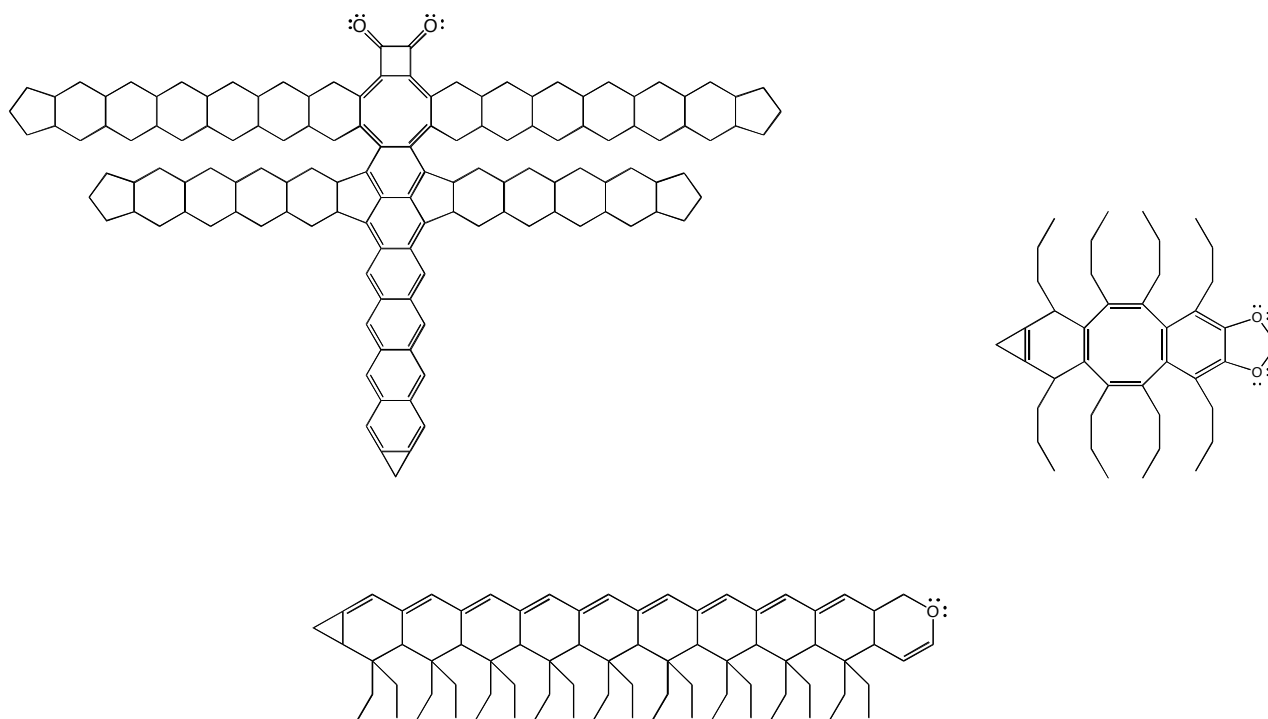


9. (4 pts) List the four mechanistic elements we talked about that together make up the large majority of the mechanism steps we will encounter this semester.

10. (14 pts) Of the list below, draw a circle around those molecules/reagents that could be considered to be a **nucleophile** in a mechanism step we have seen.



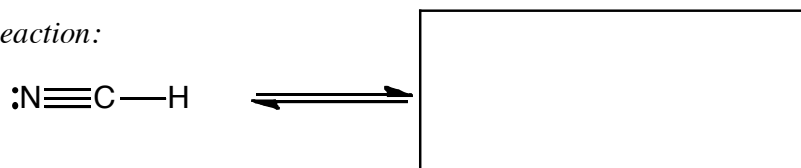
No question here, I just wanted to show you some newly discovered molecular insects. Notice one is a diketone, one is an acetal and the other is an ether.



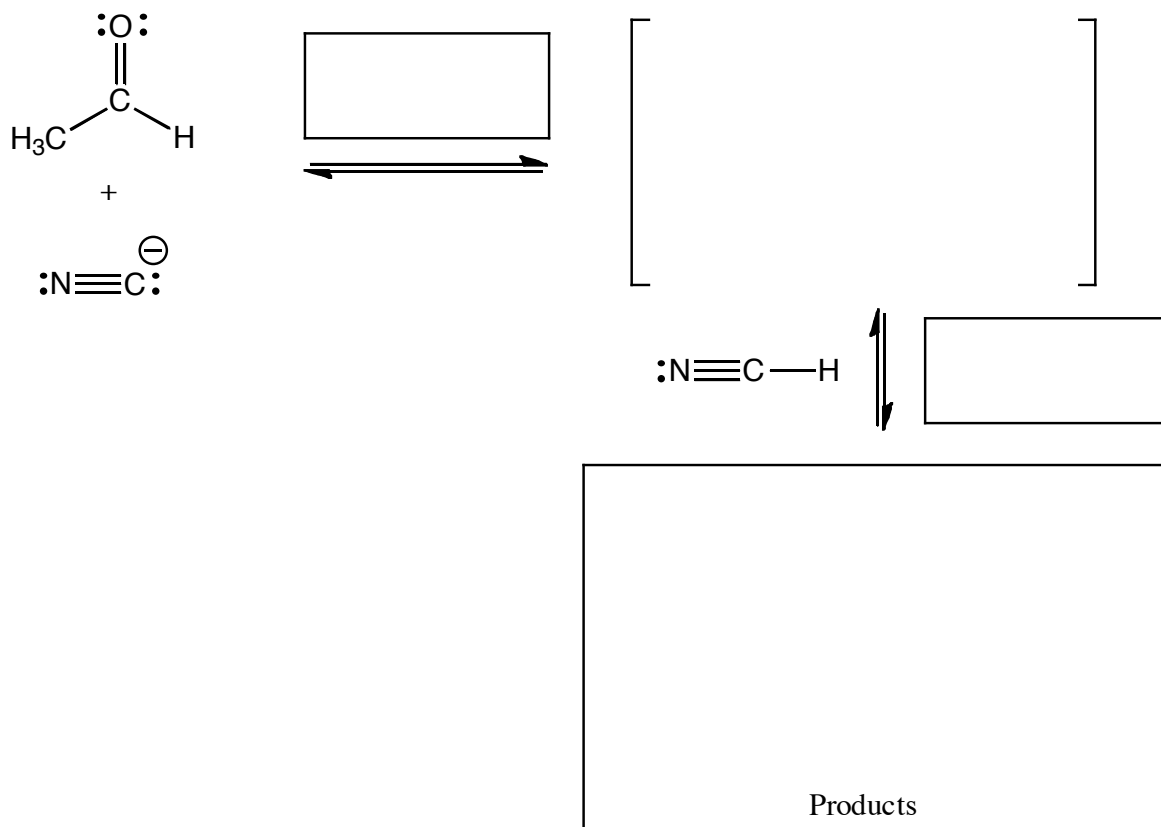
11. (14 pts.) Complete the mechanism for the following reaction of an aldehyde with HCN. **Be sure to show arrows to indicate movement of all electrons, write all lone pairs, all formal charges, and all the products for each step.** Remember, I said all the products for each step. **IF A NEW CHIRAL CENTER IS CREATED IN AN INTERMEDIATE, MARK IT WITH AN ASTERISK. IF A CHIRAL CENTER IS CREATED IN THE PRODUCTS YOU NEED TO DRAW BOTH ENANTIOMERS, AND LABEL THE PRODUCT MIXTURE AS RACEMIC IF RELEVANT.** I realize these directions are complex, so please read them again to make sure you know what we want.

HCN Reacting with an Aldehyde

Equilibrium present in reaction:



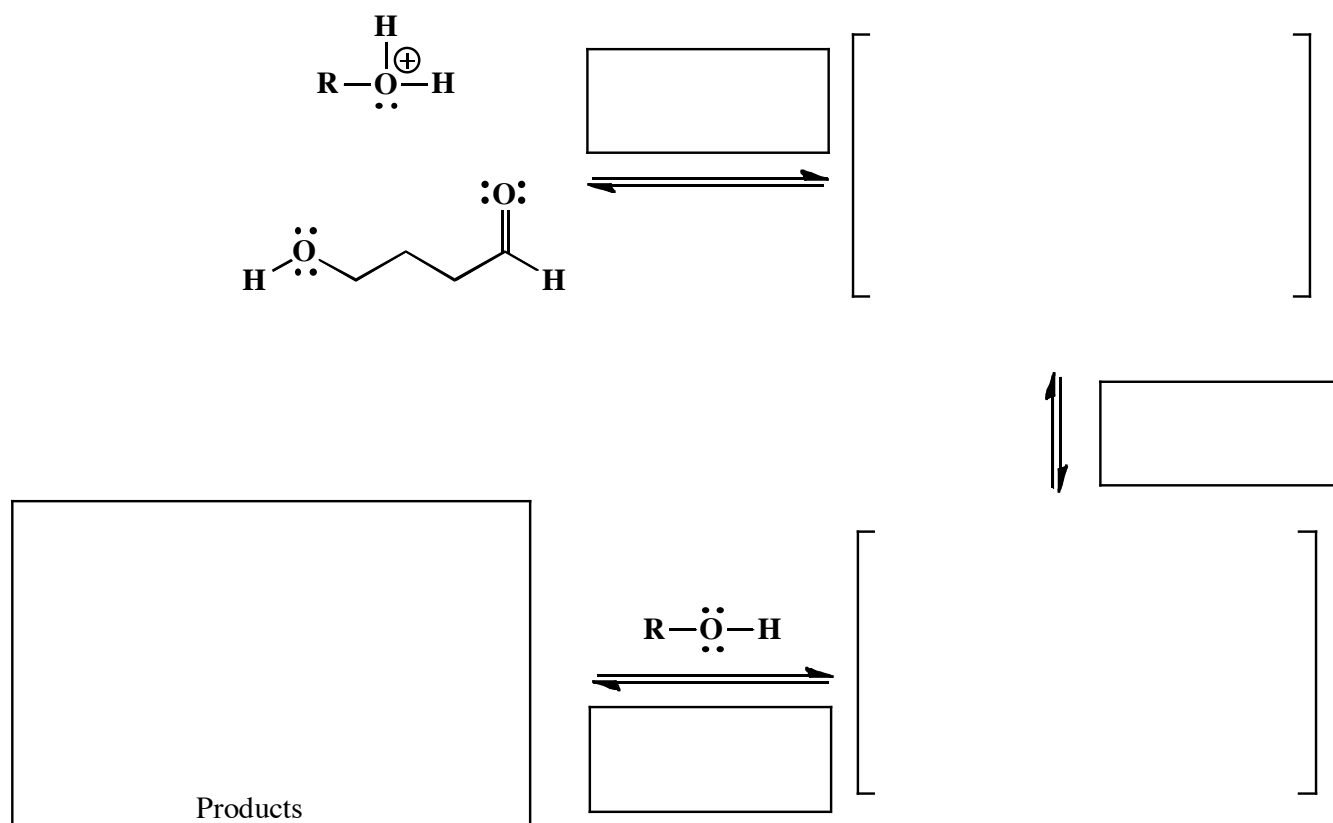
Actual reaction:



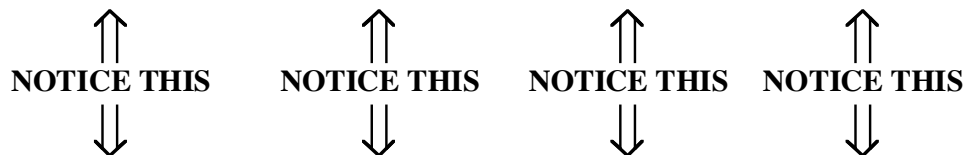
(2 pts) In the boxes provided adjacent to the first two sets of arrows, write which of the four basic mechanistic elements are involved (i.e. "Make a bond", "Add a proton", etc).

↑↑
NOTICE THIS

12. (17 pts.) Complete the mechanism for the following reaction. **Be sure to show arrows to indicate movement of all electrons, write all lone pairs, all formal charges, and all the products for each step.** Remember, I said all the products for each step. **IF A NEW CHIRAL CENTER IS CREATED IN AN INTERMEDIATE, MARK IT WITH AN ASTERISK. IF A CHIRAL CENTER IS CREATED IN THE PRODUCTS YOU NEED TO DRAW BOTH ENANTIOMERS, AND LABEL THE PRODUCT MIXTURE AS RACEMIC IF RELEVANT.** I realize these directions are complex, so please read them again to make sure you know what we want.

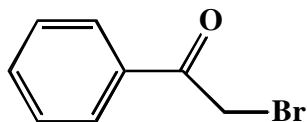
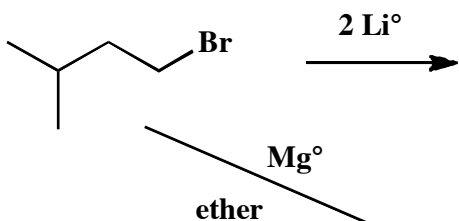


(3 pts) In the boxes provided adjacent to the first two sets of arrows, write which of the four basic mechanistic elements are involved (i.e. "Make a bond", "Add a proton", etc).

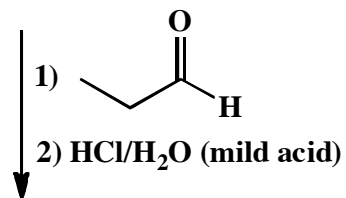
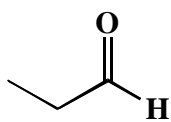


(4 pts) In one sentence, state whether the pH changes during this reaction, and why or why not that is the case.

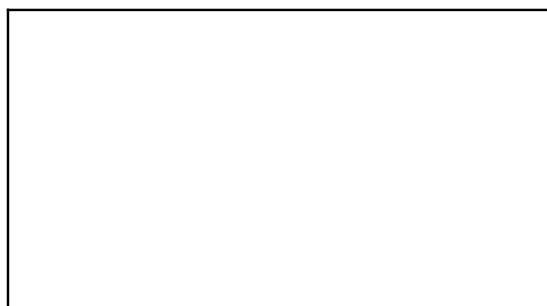
14. (3 or 5 pts.) Write the predominant product or products that will occur for each transformation. If a new chiral center is created and a racemic mixture is formed, you must draw both enantiomers and write "racemic" under the structure. Use wedges (\blacktriangleleft) and dashes (\dashv) to indicate stereochemistry. To get full credit, you only need to write the the major organic product for these. You do not have to worry about the other products.



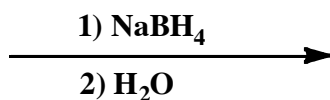
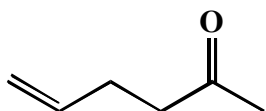
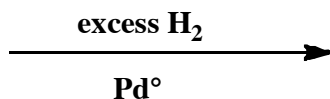
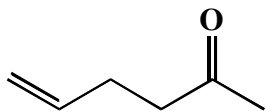
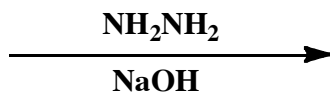
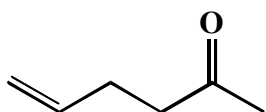
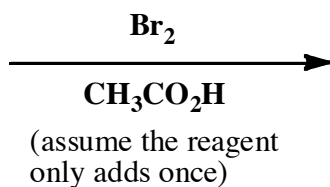
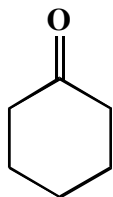
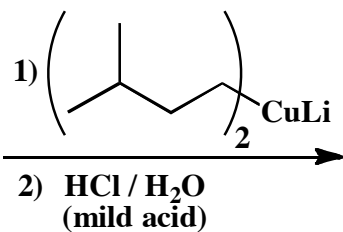
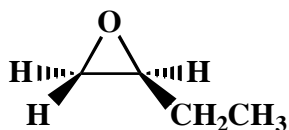
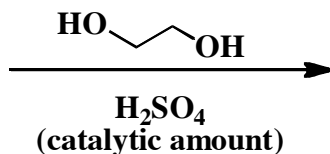
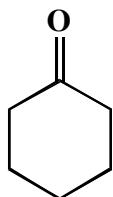
1) P(Ph)_3
2) $n\text{-BuLi}$



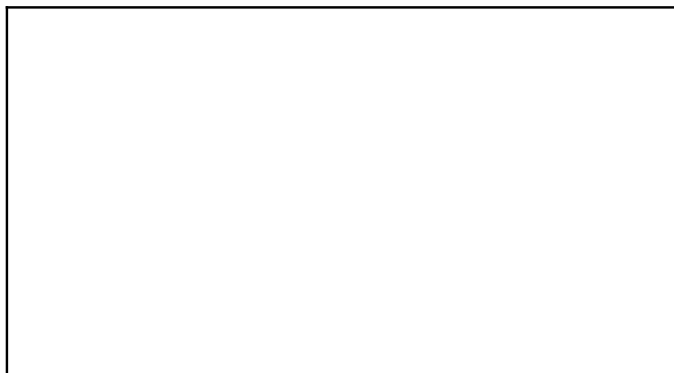
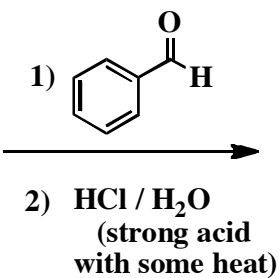
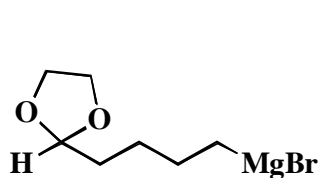
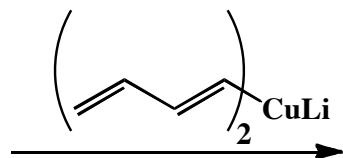
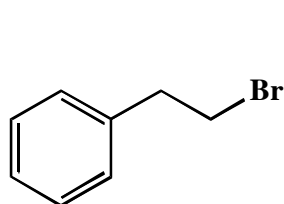
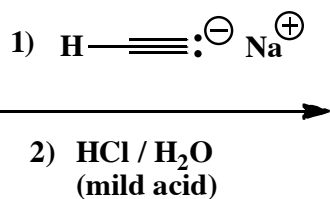
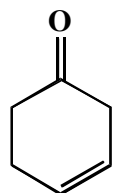
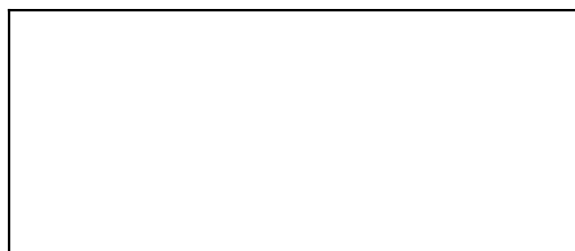
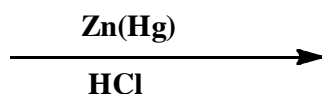
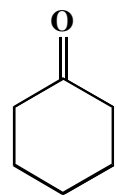
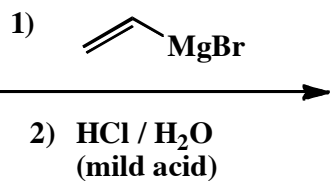
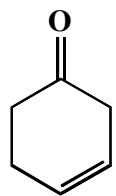
H_2CrO_4



15. (3 or 5 pts.) Write the predominant product or products that will occur for each transformation. **If a new chiral center is created and a racemic mixture is formed, you must draw both enantiomers and write "racemic" under the structure.** Use wedges (\blacktriangleleft) and dashes (\cdots) to indicate stereochemistry. To get full credit, you only need to write the the major organic product for these. You do not have to worry about the other products.



16. (3 or 5 pts.) Write the predominant product or products that will occur for each transformation. If a new chiral center is created and a racemic mixture is formed, you must draw both enantiomers and write "racemic" under the structure. Use wedges (\blacktriangleleft) and dashes (\dashv) to indicate stereochemistry. To get full credit, you only need to write the the major organic product for these. You do not have to worry about the other products.

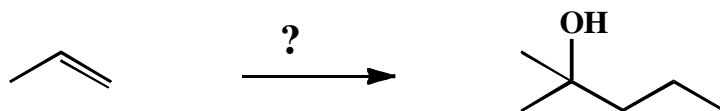


Signature _____

Pg 10 _____(13)

13. These are synthesis questions. You need to show how the starting material can be converted into the product(s) shown. You may use any reactions we have learned. Show all the reagents you need. Show each molecule synthesized along the way and be sure to pay attention to the regiochemistry and stereochemistry preferences for each reaction. If you make a racemic mixture, draw both structures and make sure to write "racemic" next to them.

(13 pts) **All of the carbon atoms of the products must come from the starting materials for this one!**

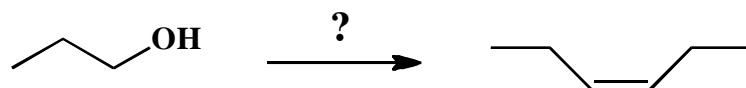


Signature _____

Pg 11 _____(13)

13. These are synthesis questions. You need to show how the starting material can be converted into the product(s) shown. You may use any reactions we have learned. Show all the reagents you need. Show each molecule synthesized along the way and be sure to pay attention to the regiochemistry and stereochemistry preferences for each reaction. If you make a racemic mixture, draw both structures and make sure to write "racemic" next to them.

(13 pts) **All of the carbon atoms of the products must come from the starting materials for this one!**

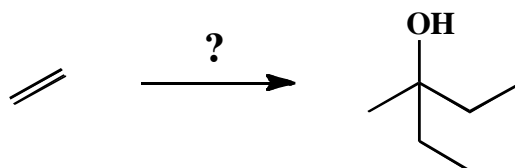


Signature _____

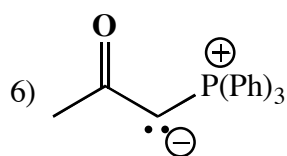
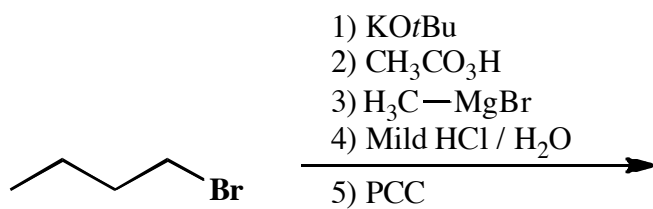
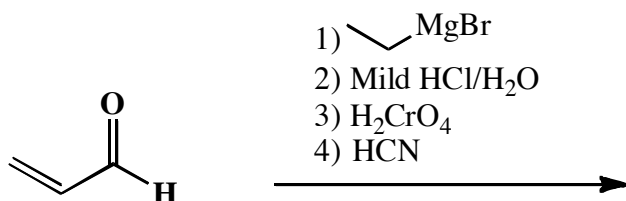
Pg 12 _____(19)

13. These are synthesis questions. You need to show how the starting material can be converted into the product(s) shown. You may use any reactions we have learned. Show all the reagents you need. Show each molecule synthesized along the way and be sure to pay attention to the regiochemistry and stereochemistry preferences for each reaction. If you make a racemic mixture, draw both structures and make sure to write "racemic" next to them.

(19 pts) **All of the carbon atoms of the products must come from the starting materials for this one!**



14. (7 pts each) For the following sequences of reactions, work through all the different steps and then write the final product(s). Assume only the predominant product is formed at each step. You must indicate stereochemistry with wedges and dashes. You must draw all stereoisomers produced as predominant products and write "racemic" under the structures when appropriate. **We are only grading your final product(s) here.**



15. (4 pts each) Here are the MCAT passage style questions. Please read the passage and then answer the multiple choice questions at the end by **circling the correct statement**. The passage will provide you with some new information, and combine that with what you already know to decide which is the best answer for each question.

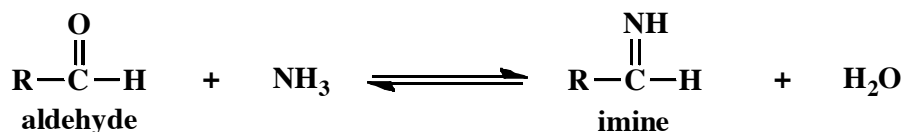
As described along with the Golden Rules of Chemistry, reactions need both "motive" and "opportunity" to occur. The "motive" refers to the requirement for a thermodynamic driving force. Stated another way, a reaction will be favorable if the products are of lower free energy than the starting materials. In a practical sense this usually happens when the bonds being made in the reaction are stronger than the bonds broken. The "opportunity" refers to the reaction mechanism. There can be no unusually high energy barriers if a reaction is proceed quickly. The higher the energy barrier, the slower the reaction. A high energy barrier will be present if there is any unfavorable step in the reaction mechanism, so understanding the mechanism can help you predict relative energy barriers in reactions.

The strength of chemical bonds is usually listed in terms of a table of bond dissociation enthalpies (BDE's) A bond dissociation enthalpy is the energy required to break a bond to give two radicals as shown:



	Bond dissociation enthalpy
H ₂ C=CH ₂ (both bonds together)	147 kcal/mol
H ₂ C=O (both bonds together)	180 kcal/mol
H ₂ C=NR (both bonds together)	148 kcal/mol
H ₃ C-CH ₃	90 kcal/mol
H ₃ C-H	105 kcal/mol
H ₃ C-OH	92 kcal/mol
H ₃ CO-H	105 kcal/mol
H ₂ N-H	93 kcal/mol
HO-H	119 kcal/mol

We learned that aldehydes and ketones will react with amines to give imines according to the following reaction (shown here for an aldehyde):



Use the table of bond dissociation enthalpies to choose the correct statement from among the following:

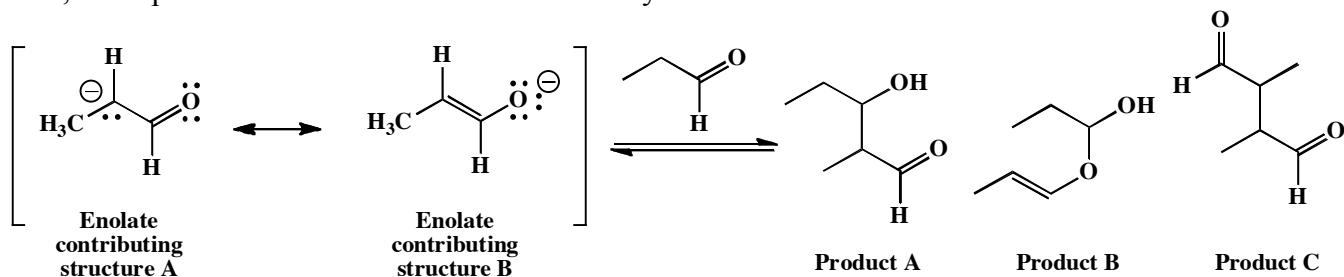
- Equilibrium favors imine formation because a C=N bond is significantly stronger than a C=O bond.
- Equilibrium favors imine formation because the O-H bond in water is considerably stronger than the N-H bond in ammonia.
- Equilibrium favors the aldehyde because a C=O bond is significantly stronger than a C=N bond.
- Equilibrium favors the aldehyde because the N-H bond in ammonia is considerably stronger than the O-H bond in water.

15 cont. (4 pts each)

Recall that the order of acidity of water, methanol, ammonia and methane is: water and methanol are roughly tied for being the most acidic, followed by ammonia. Methane being is by far the least acidic. Which of the following statements must therefore be true:

- There is a direct correlation between increasing acidity and increasing bond dissociation enthalpy.
- There is a direct correlation between increasing acidity and decreasing bond dissociation enthalpy.
- There is a rough correlation between increasing acidity and decreasing bond dissociation enthalpy.
- There is no correlation between acidity and bond dissociation enthalpy, so relative acidity must be determined by parameters other than relative bond enthalpies.

Last Friday you were introduced to the anion called an enolate that is produced when the α -hydrogen of an aldehyde or ketone is deprotonated. The great thing about enolates is that they can act as nucleophiles when reacting with other carbonyls. For example, the following reaction, called an aldol reaction, takes place between an enolate and an aldehyde.



Enolate contributing structure B is the major contributor because the negative charge is on the more electronegative O atom. The mechanism of the aldol reaction is carbonyl addition mechanism A: “Make a bond” at the carbonyl carbon followed by “Add a proton”.

- As written, Product A can be rationalized as coming from attack of the aldehyde carbonyl by the C atom with partial negative charge of the enolate followed by the addition of a proton.
- As written, Product A can be rationalized as coming from attack of the aldehyde carbonyl by the O atom of the enolate followed by the addition of a proton.
- As written, Product B can be rationalized as coming from attack of the aldehyde carbonyl by the C atom with partial negative charge of the enolate followed by the addition of a proton.
- As written, Product C can be rationalized as coming from attack of the aldehyde carbonyl by the C atom with partial negative charge of the enolate followed by the addition of a proton.

Use the information in the BDE table to identify the correct statement about the distribution of the products at equilibrium.

- Product A is the predominant product.
- Product B is the predominant product.
- Product C is the predominant product
- Products A, B, and C are formed in roughly equal amounts.