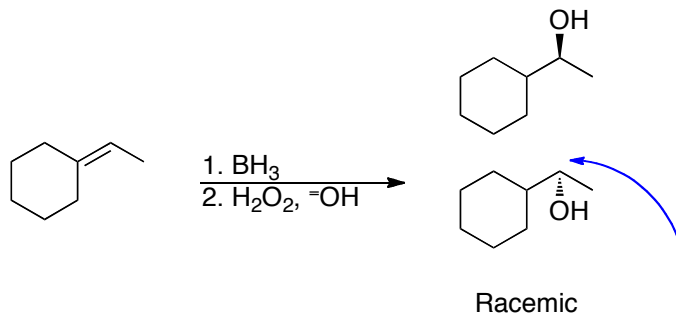
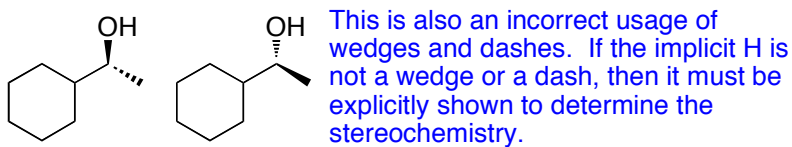


Problem Set #6

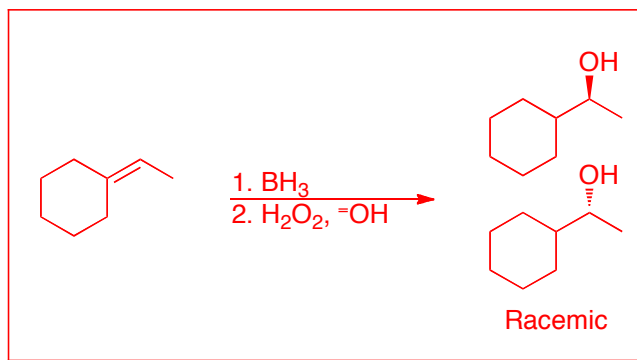
This is a WRONG answer:



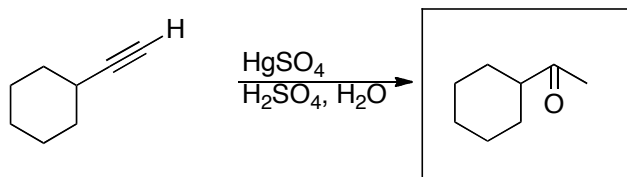
The wedge/dash should be coming out of the carbons in the way of the top molecule, not the bottom one. It is confusing to tell which enantiomer you are intending to draw. Be consistent and draw it like the correct answer.



This is the CORRECT answer



This is a WRONG answer:



If a carbon has sp^2 geometry, then please draw the bond angles correctly. The bond angles should be 120° .

This is the CORRECT answer:

